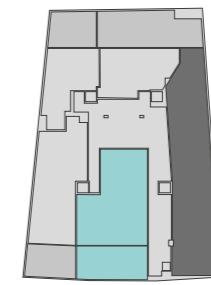




EDIFICIO MAGNOLIA

SS02D



Planta semi sotano



Vivienda SS 02 D

Area techada	127.90 m ²
Area descubierta	61.60 m ²
Area ocupada	189.50 m ²



Tel: 00 511 440 0571
 Amador Merino Reyna No.281 of. 1201
 San Isidro, Lima - Peru
 fpalma@ibherperu.com

