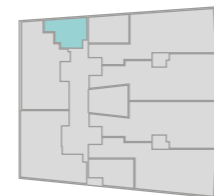


EDIFICIO MAGNOLIA

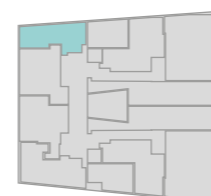
702 B



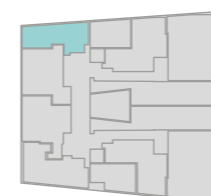
ESCALA GRÁFICA



Planta sexta



Planta septima



Planta Atico



Vivienda 702 B

| | |
|------------------|----------------------|
| Area techada | 86.50 m ² |
| Area descubierta | 18.10 m ² |
| Area ocupada | 104.60m ² |

IBHER

Tel: 00 511 440 0571
Amador Merino Reyna No.281 of. 1201
San Isidro, Lima - Peru
fpalma@ibherperu.com